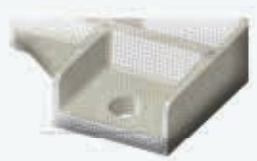
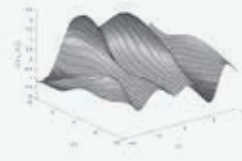
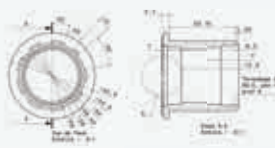


PHIMECA

DESIGN & MAINTAIN YOUR NUCLEAR EQUIPMENT



Founded in 2001, Phimeca is an engineering company with expertise in modeling and data sciences. Our mission is to help you design, and maintain your nuclear equipment.



YOUR CHALLENGES:

- ✓ Speed up your development processes
- ✓ Increase your equipment lifespan
- ✓ Reduce your operation costs
- ✓ Increase the reliability of your designs and prepare their certifications
- ✓ Secure your equipment
- ✓ Make a successful digital transformation
- ✓ Anticipate and optimize the preparation of your maintenance operations
- ✓ Improve your teams' skills

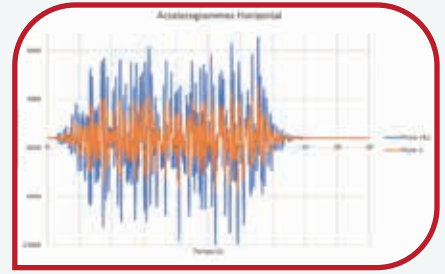
EXPERTISE & SKILLS AT YOUR SERVICE

- ➔ NUMERICAL CALCULATION / CFD & SIMULATION (ASME, RCCM...)
- ➔ TESTS: SPECIFICATIONS, MONITORING AND RECALIBRATION
- ➔ RELIABILITY
- ➔ DATA SCIENCE & AI
- ➔ CUSTOM-MADE SOFTWARE PRODUCTS DEVELOPMENT
- ➔ TRAINING



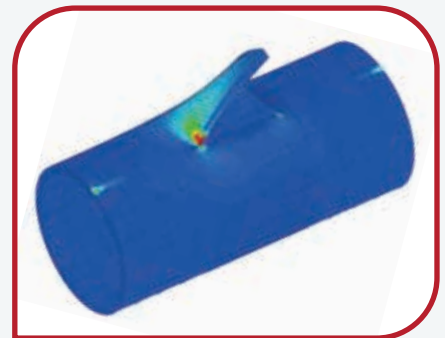
OUR RESOURCES & TOOLS

- ➔ 30 employees including 28 engineers and Ph.D.
- ➔ Software products: Ansys, SALOME, Code_Aster, SimCenter (NX), Abaqus, OpenFOAM, Python, R, OpenTURNS, Persalys, MODELICA



EXAMPLES OF ACHIEVEMENT

- ✓ Seismic computation using transient approach
- ✓ Dynamic analysis of neutron sensors
- ✓ Static analysis of pipe thickness loss
- ✓ Reliability analysis of the reactor vessel
- ✓ Nonlinear computation of the resistance of steam generator tubes
- ✓ Pump dynamic calculation



THEY TRUST US



CUSTOMER FEEDBACK :

« Phimeca's studies, calculations and models help us to validate our designs subjected to seismic events but also to measure the stresses and forces at the anchor points during the test phases. I appreciate the very high level of technical mastery, the quality of service, the responsiveness and the great flexibility of Phimeca. »

Stefan Gay
Nuclear Project Engineer
SCHNEIDER ELECTRIC

CONTACT US

📍 **CLERMONT-FERRAND**
34 rue de Sarliève
F-63800 Cournon d'Auvergne
FRANCE
☎ (00 33) 4 73 28 93 66

📍 **PARIS**
18/20 boulevard de Reuilly
F-75012 Paris
FRANCE
☎ (00 33) 1 58 51 18 02

& ALSO ANNECY, LYON & CADARACHE